

Communicating Power

MIDTRONICS

CELLTRON[®] ADVANCED Stationary Battery String Analyzer

The CELLTRON ADVANCED is a professional level tool for stationary battery management. Research proven technology and field-tested design make it a must for critical power maintenance.

Features:

- Voltage measurement to 3 decimal places
- Reduced testing time
- 16 volt testing capability
- Tests multiple intercell connectors & 8 posts
- Compatible with the PowerSure database
- Quick, simple, safe & accurate operation
- High ampere-hour (up to 6000 AH) testing capability
- 16 internal memory registers capable of storing 480 consecutive test results and overall string statistics
- Enhanced backlit display and screen resolution
- Voltage logging only option
- Quick reset option for erroneous test entries
- Measures individual cell and overall string health and voltage
- Consistent, repeatable on-line testing without discharge to batteries
- Tests 2-volt through 16-volt batteries on-line or off-line
- Provides advanced warning of potential battery failures
- Test each cell in under 10 seconds
- Helps prioritize battery replacements for more cost-effective system management
- Tests both battery cell and intercell strap integrity
- No external power source needed
- Portable IR wireless printing and data transfer to PC laptop
- User definable battery reference number storage and fault thresholds



INNOVATION



TECHNOLOGY



QUALITY



WORLDWIDE

CELLTRON® ADVANCED

Stationary Battery String Analyzer

Specifications

Model Number:
CTA-4000 (Kit); CTA-2000 (Analyzer Only)

Applications:
Tests individual lead acid cells or monoblocs (up to 16 Volts) in any common configuration

Voltage:
1.0 - 20 Volts DC

Conductance:
100 - 19,990 Siemens

Test Data Storage:
16 string locations of 480 test results stored internally

Accuracy:
+ 2% across test range

Voltmeter Resolution:
5 mV DC

User Programmable Functions:

- Preset values for over 250 battery types
- Low voltage alarm setting
- Low conductance warning / failure

Calibration:
Auto-calibration prior to every test, no future calibration required

Power Requirements:
9.6, 1600 mA, NiMH rechargeable battery pack & charger

Environmental Operating Range:
0 to +40°C, 95% relative humidity, non-condensing

Storage Temperature:
-20 to 82°C

Over Voltage Protection:

- Fused protection to 16 volts DC
- Reverse polarity protected

Housing Material:
Acid resistant ABS plastic

Analyzer Dimensions:
9 in x 4 in x 2 1/2 in
230 mm x 102 mm x 65 mm

Case Dimensions:
19 in x 15.5 in x 5 in
750 mm x 610 mm x 200 mm

Analyzer Weight:
2 lb / 907 gm

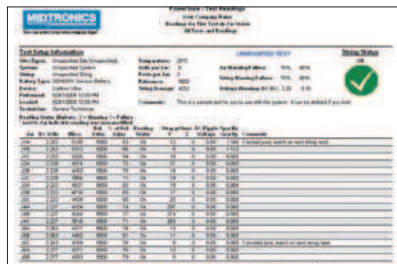
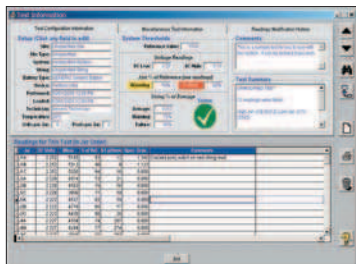
CTA-4000 Test Kit Shipping Weight:
14 lb / 6.4 kg



CTA-4000 Kit

Accessories included in CTA-4000 Kit

- Protective boot
- Rechargeable battery pack
- Infrared PC data receiver & software
- Infrared printer
- Infrared temperature sensor
- Protective carrying case
- Both clamp and probe cables
- Spare fuses, printer paper, probe tips



CTA-4000 Kit includes the new Midtronics PowerSure™ Battery Management Database—offering a complete data collection and reporting tool.